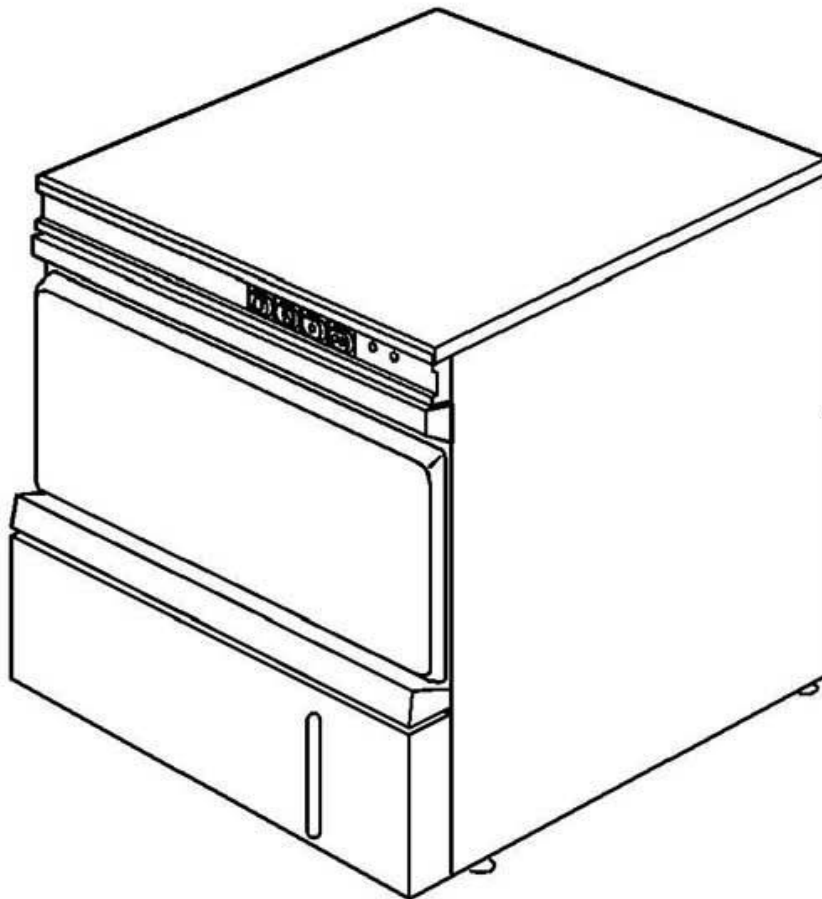


winterhalter

Spare Parts List GS 29 B

Edited: 06/95
Revised: 27.10.04

Part no.: 89001570



Summary

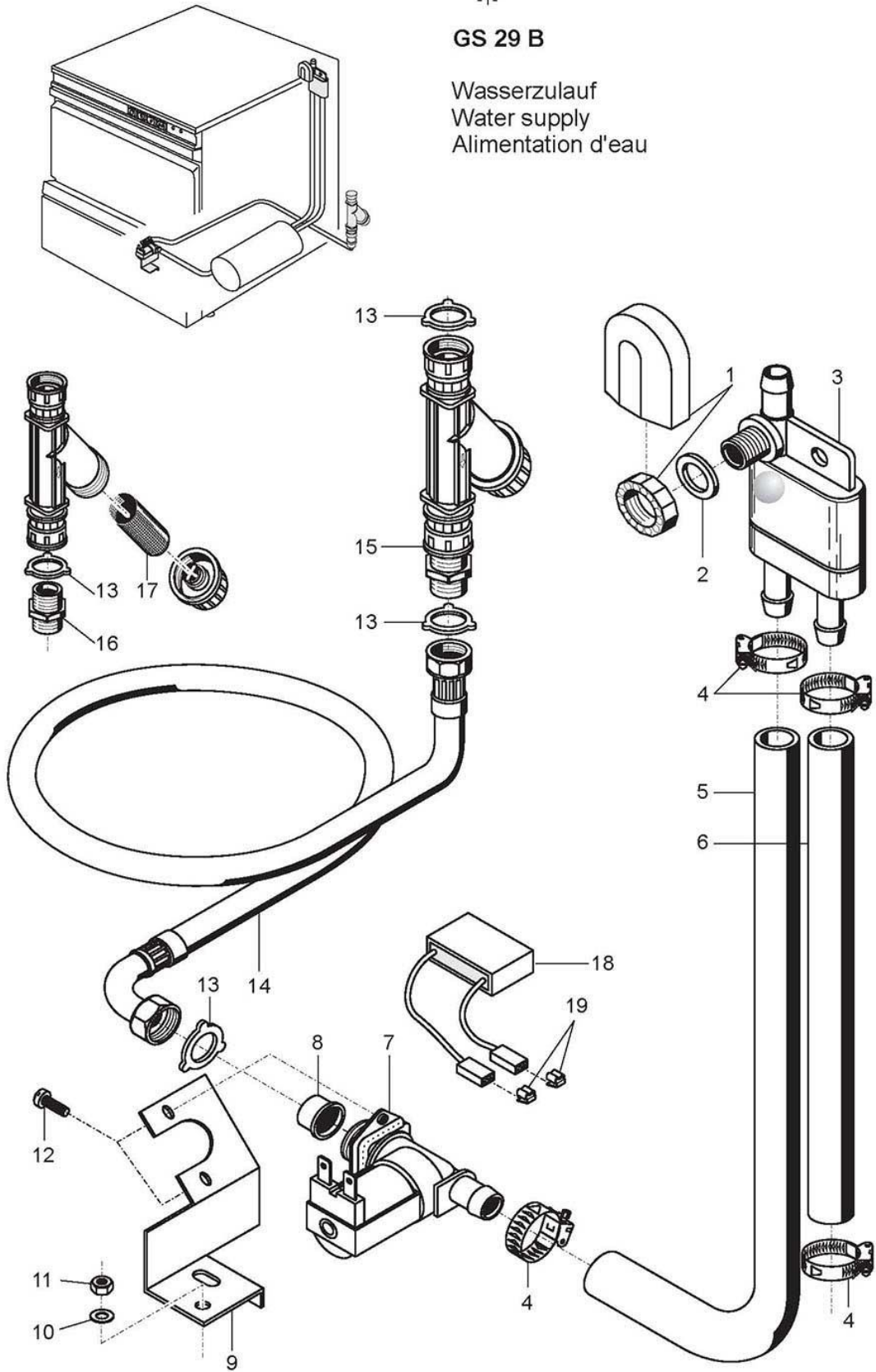
Water supply	page 1 and 2
Water drain and tank heating	page 3 and 4
Wash system I	page 5 and 6
Wash system II	page 7 and 8
Rinsing I	page 9 and 10
Rinsing II	page 11 and 12
Dosing	page 13 and 14
Verkleidung, Behälter, Untergestell	page 15 and 16
Door	page 17 and 18
Electrical parts I	page 19 and 20
Electrical parts II	page 21 and 22
Drain pump	page 23 and 24

Racks and accessories see separate list.

In column "Pc." the necessary number is indicated, as far as more than 1 part is installed and if the part is no standard part.

GS 29 B

Wasserzulauf
Water supply
Alimentation d'eau



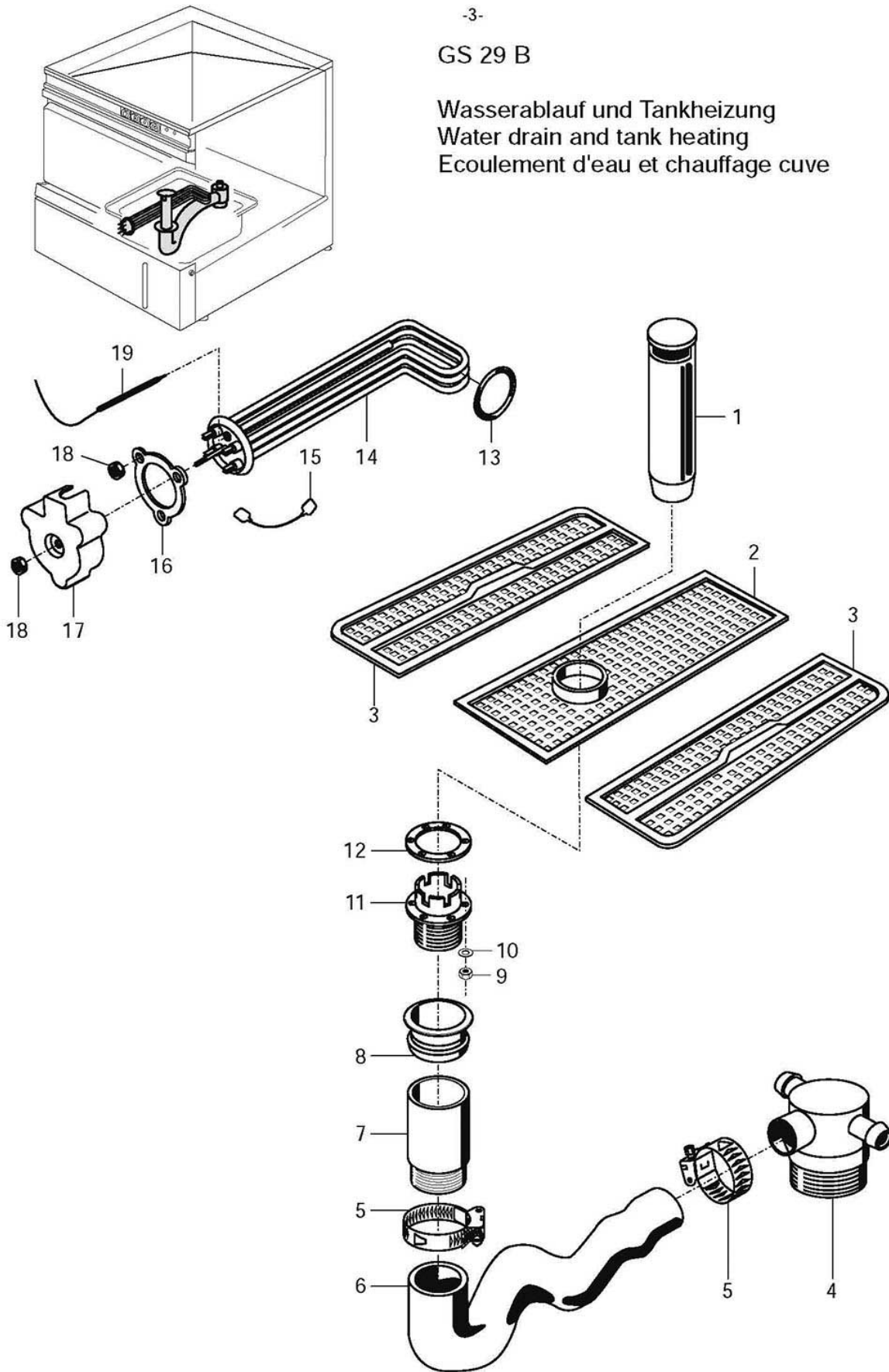
GS 29 B

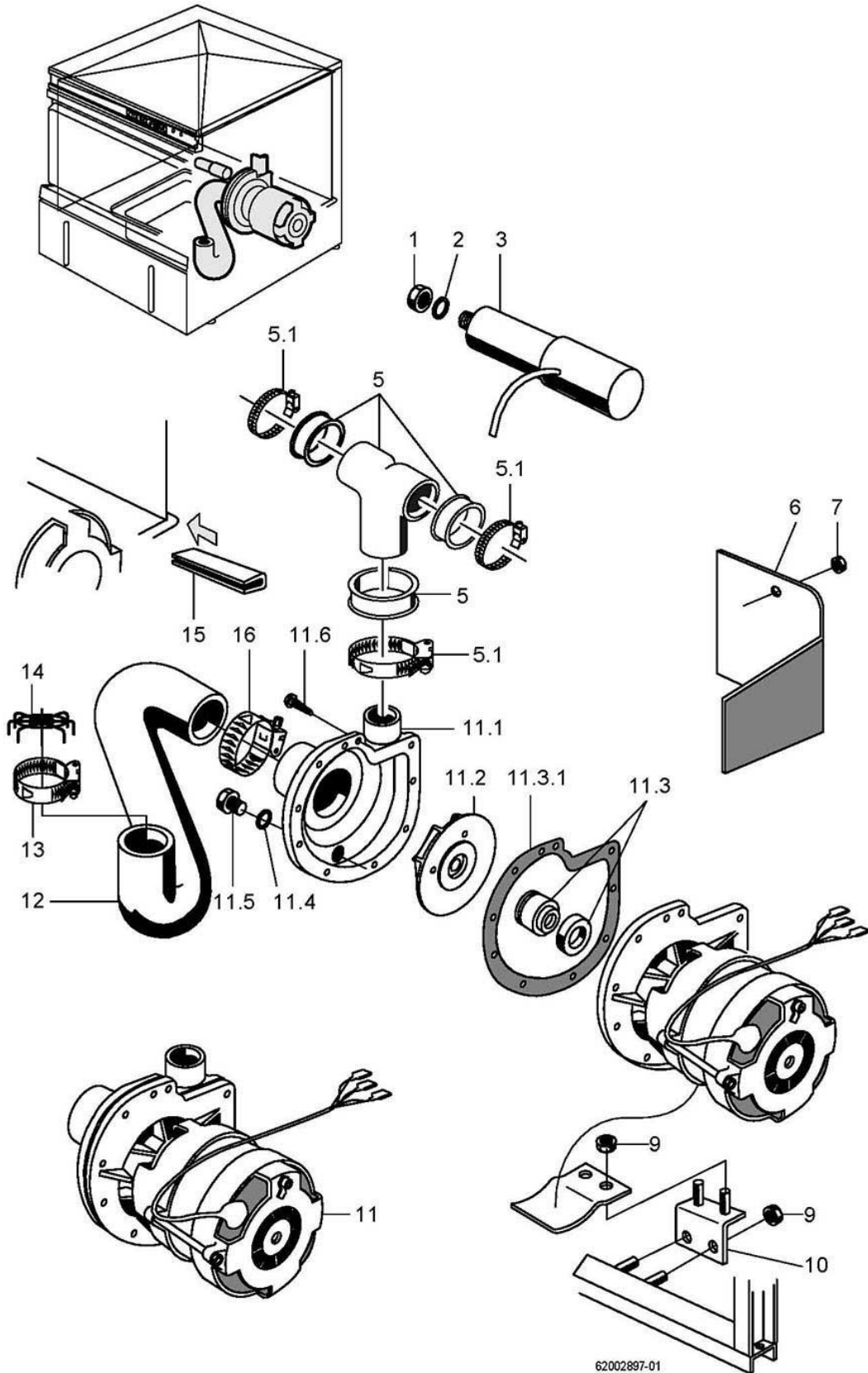
Water supply

Item	Designation	Part no.	Pc.	Notes
1	Set tank inlet	61004545		Incl. item 2
2	Seal \varnothing 24 x \varnothing 17 x 2	62001366		
3	Backflow restrictor, sidep	35 01 194		
4	Hose clip \varnothing 14 - \varnothing 24	28 02 108		
5	Hose DN 13,5 x 3.5 x 1000	40 02 029		Per metre
6	Hose DN 13.5 x 3.5 x 830	40 02 029		Per metre
7	Solenoid valve (flow controller 15l); 220-240V; 50/60Hz	31 06 180		
	Kit solenoid valve (flow controller 5l); 200-240V/50-60HZ/+10%	60004147		Japan
8	Dirt strainer	31 06 186		
9	Solenoid valve support	62001891		
10	Washer \varnothing 5.3 x \varnothing 12 x 0,8	22 02 213		
11	Hex nut M 5, self-securing	21 05 302		
12	Pan-head screw M 4 x 8	20 10 309		
13	Seal \varnothing 24 x \varnothing 16 x 3	80002241		
14	Metal hose DN 15 x 2000; G 3/4"	29 01 316		
n.p.	Extension hose 1m	29 01 307		Optional extra
n.p.	Seal \varnothing 24 x \varnothing 16 x 3	80002241		Optional extra
15	Dirt trap cpl.	80002153		Incl. item 13, 16, 17
16	Double nipple	80002167		
17	Dirt strainer	80002728		
18	RC element; 0,15 μ F; 3,3k Ω	31 13 114		connect parallel to item 12
19	Tab connector	31 12 018	2	

GS 29 B

Wasserablauf und Tankheizung
Water drain and tank heating
Ecoulement d'eau et chauffage cuve

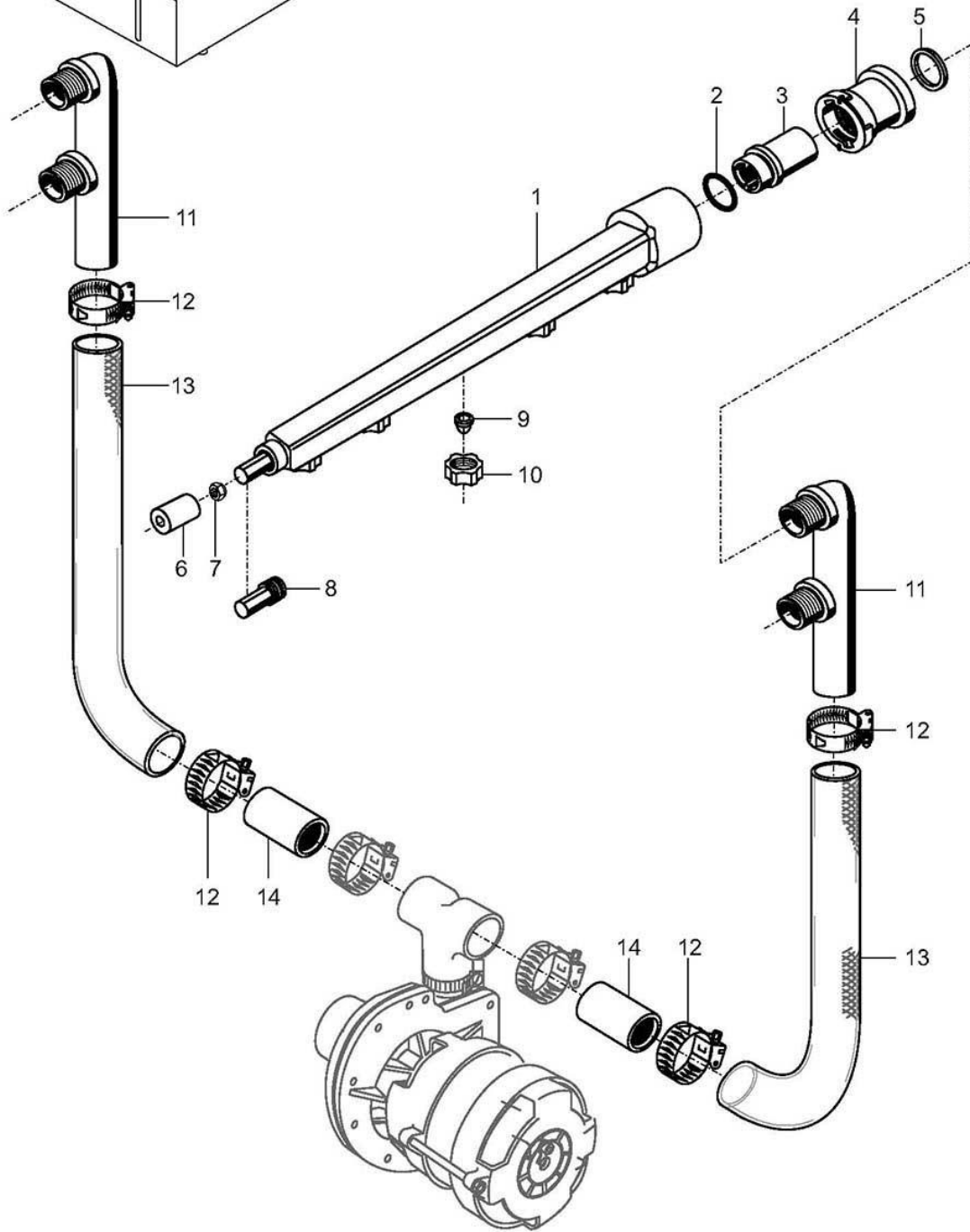
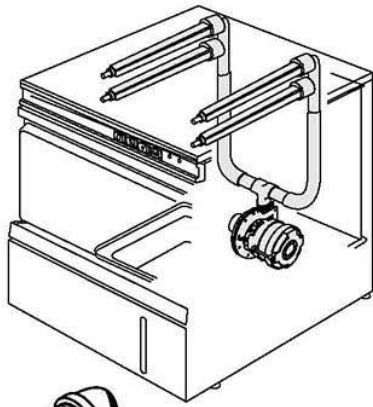




62002897-01

GS 29 B

Waschsystem II
Wash system II
Système de lavage II



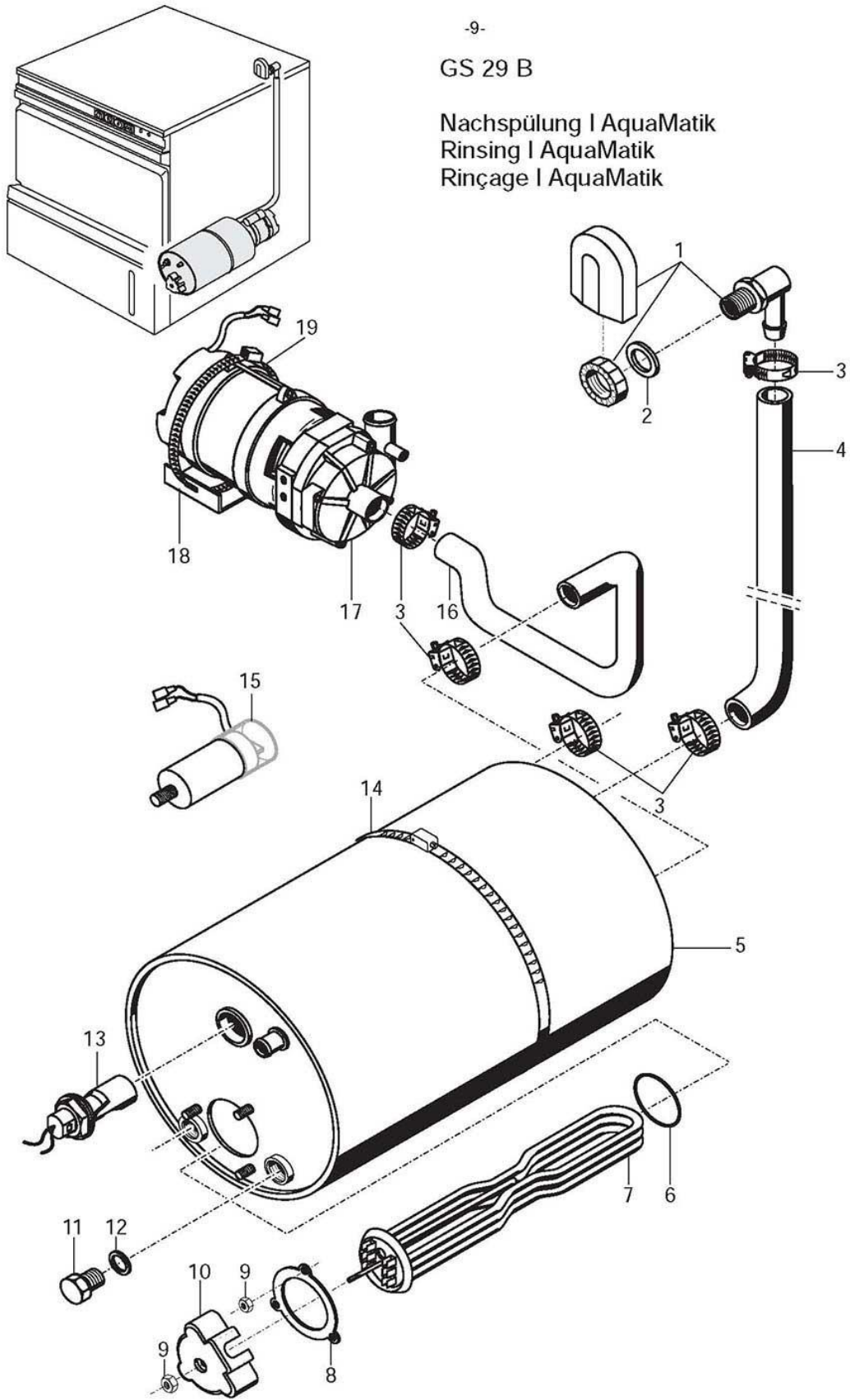
GS 29 B

Wash system II

Pos.	Designation	Part no.	Pc.	Notes
1	Wash arm cpl.	62001807	4	incl. pos. 8, 9, 10
2	O-ring \varnothing 28 x 2,0	27 07 049	4	
3	Hexagon cap nut \varnothing 38 x 34; G 3/4"	61004059	4	
4	Lock ring \varnothing 49 x 28	61002023	4	
5	Seal \varnothing 34 x \varnothing 27 x 2	27 09 025	4	
6	Guide socket \varnothing 28 x 30	61002263		
7	Hex nut M 4	21 05 300		Self-securing
8	Wash arm plug G 1/2" x 37	35 01 210	4	
9	Cross recession jet 10°	62001809	20	
10	Coupling nut \varnothing 32 x 9,5	62001808	20	
11	Wash manifold	62001998	2	Up to mach.no.: 356 162
	Wash manifold	62002657	2	From mach.no.: 356 163
12	Hose clip \varnothing 24 - \varnothing 36	28 02 111		
11	Fabric hose \varnothing 25 x 4,5 x 400	40 01 023	2	per metre
12	Hose socket straight \varnothing 25 x 95	29 06 525	2	

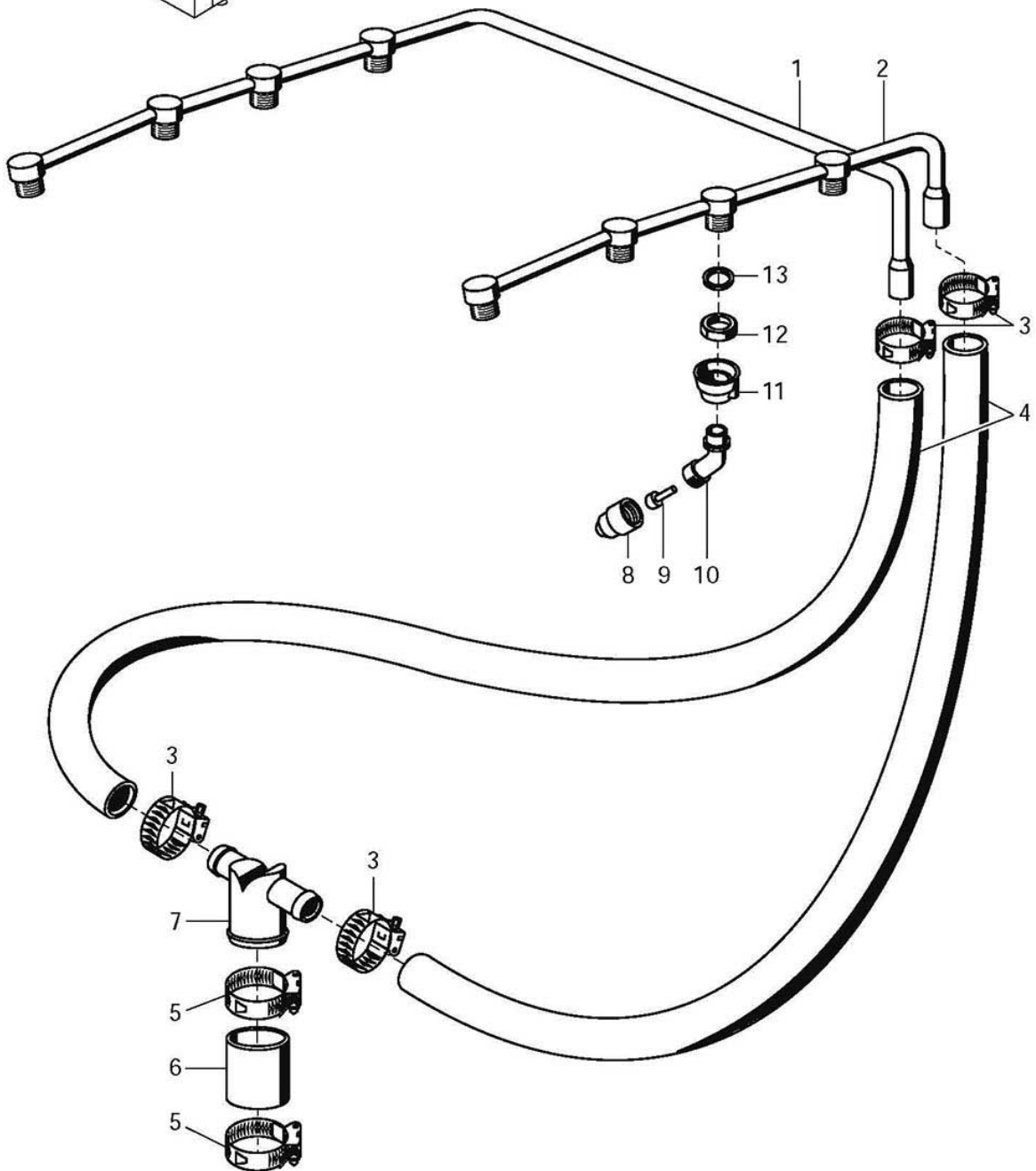
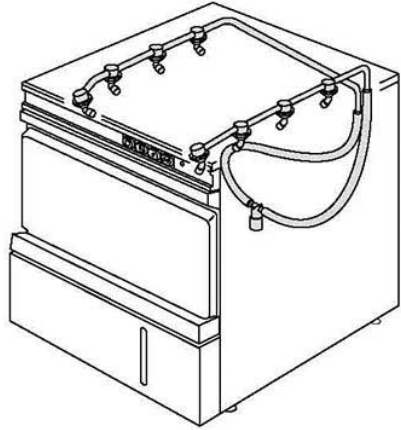
GS 29 B

Nachspülung | AquaMatik
Rinsing | AquaMatik
Rinçage | AquaMatik



GS 29 B

Nachspülung II
Rinsing II
Rinçage II



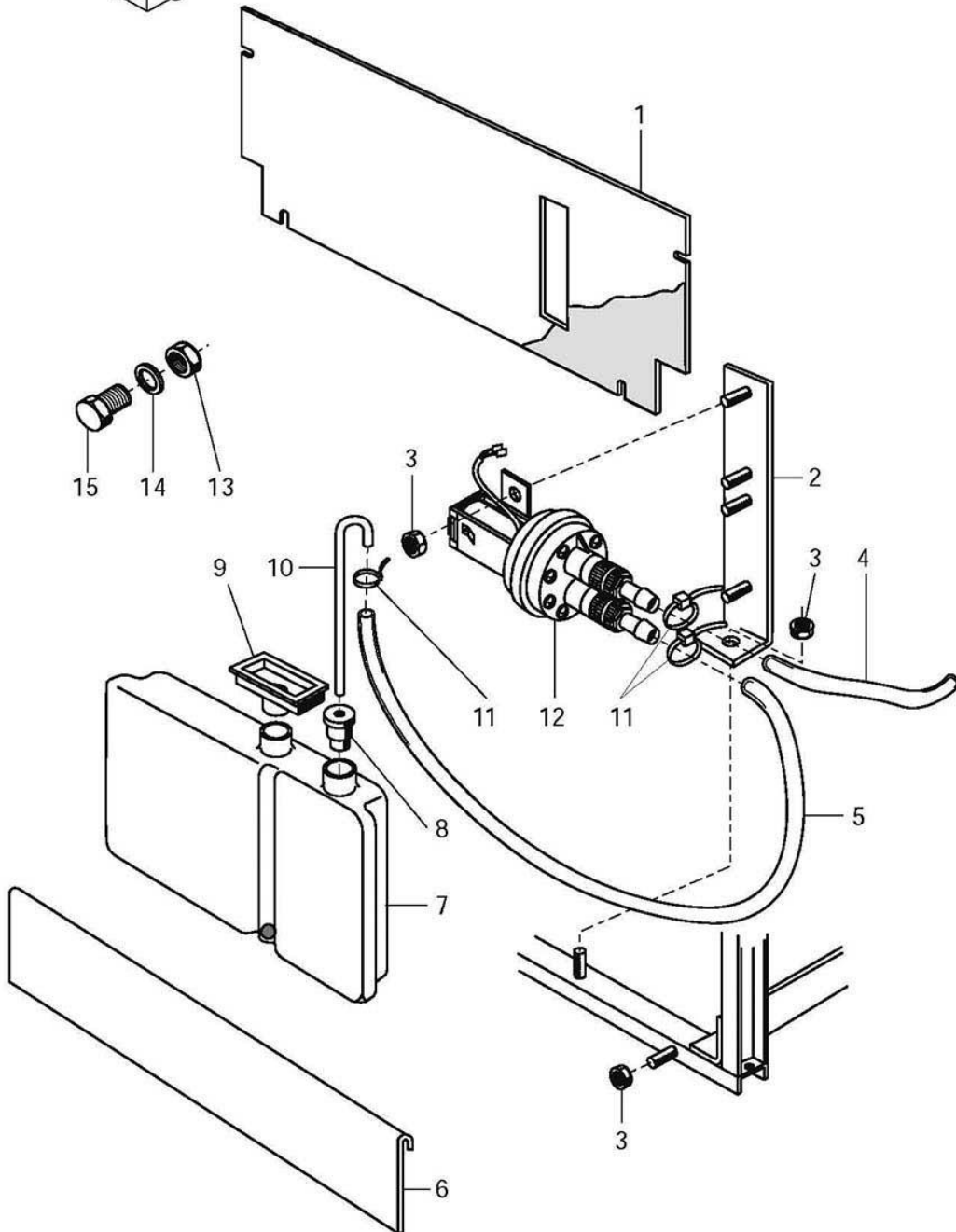
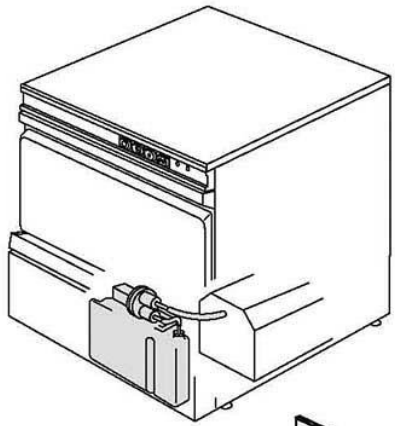
GS 29 B

Rinsing II

Pos.	Designation	Part no.	Pc.	Notes
1	Top rinse manifold left cpl.	62002842		Incl. O-ring 27 07 001
2	Top rinse manifold right cpl.	62002841		
3	Hose clip \varnothing 20 - \varnothing 30	28 02 306		
4	Reinforced hose \varnothing 13,5 x 3,5 x 700	40 02 029	2	per metre
5	Hose clip \varnothing 24 - \varnothing 34	28 02 309		
6	Fabric hose \varnothing 25 x 4,5 x 50	40 01 023		per metre
7	T-piece \varnothing 25 x \varnothing 10; 37 x 75	62001329		
8	Rinse jet cap	65002754	8	
9	Jet swirl	65002755	8	
10	Rinse jet adapter	62001176	8	
11	Coupling nut for jet	62001174	8	
12	Locking nut G 3/8"	30 09 200	8	
13	Seal \varnothing 24 x \varnothing 17 x 2	62001366	8	Up to mach. no.: 381 854
	O-ring \varnothing 16 x 2,5	27 07 001	8	From mach. no.: 381 855

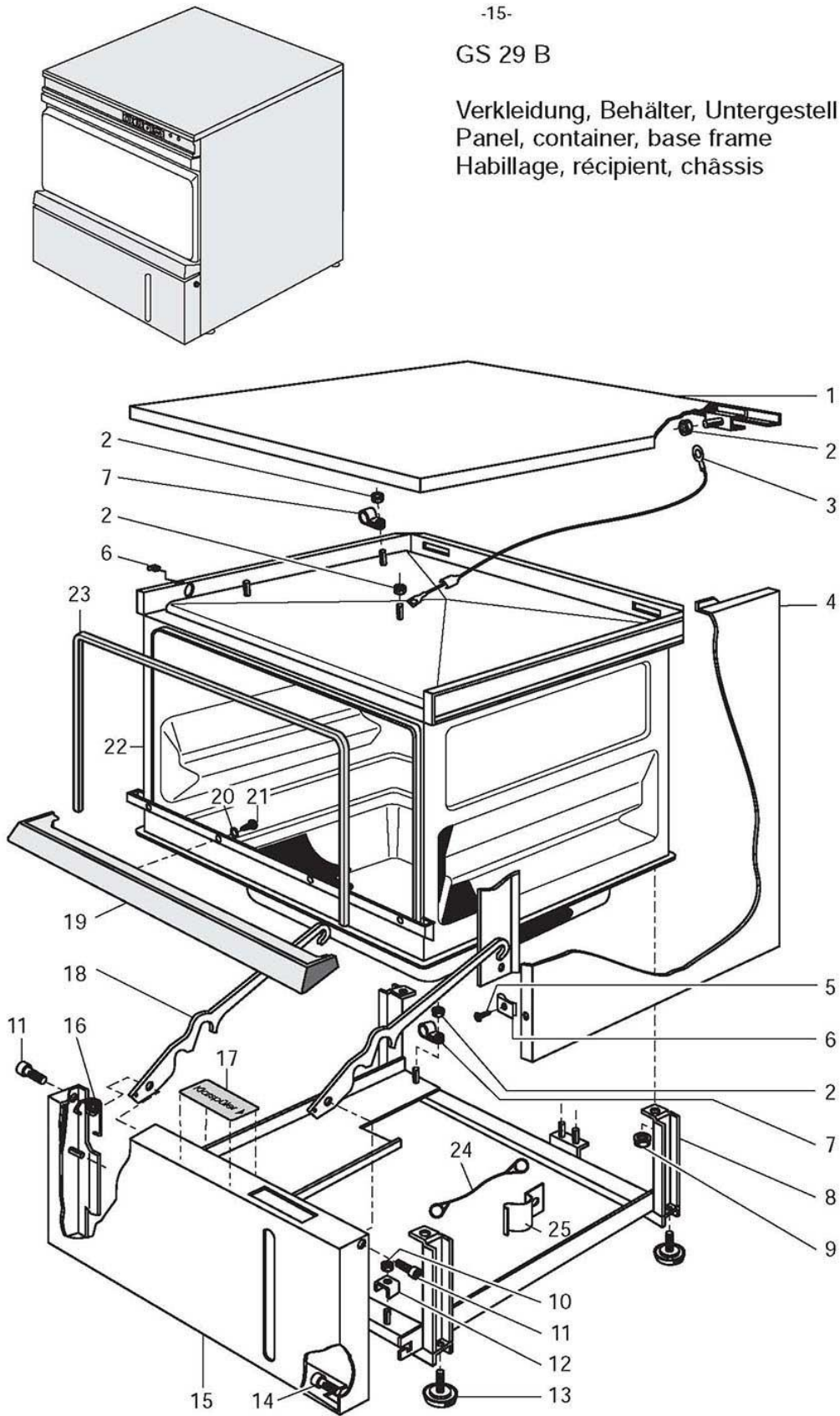
GS 29 B

Dosierung
Dosing
Dosage



GS 29 B

Verkleidung, Behälter, Untergestell
Panel, container, base frame
Habillage, récipient, châssis



GS 29 B

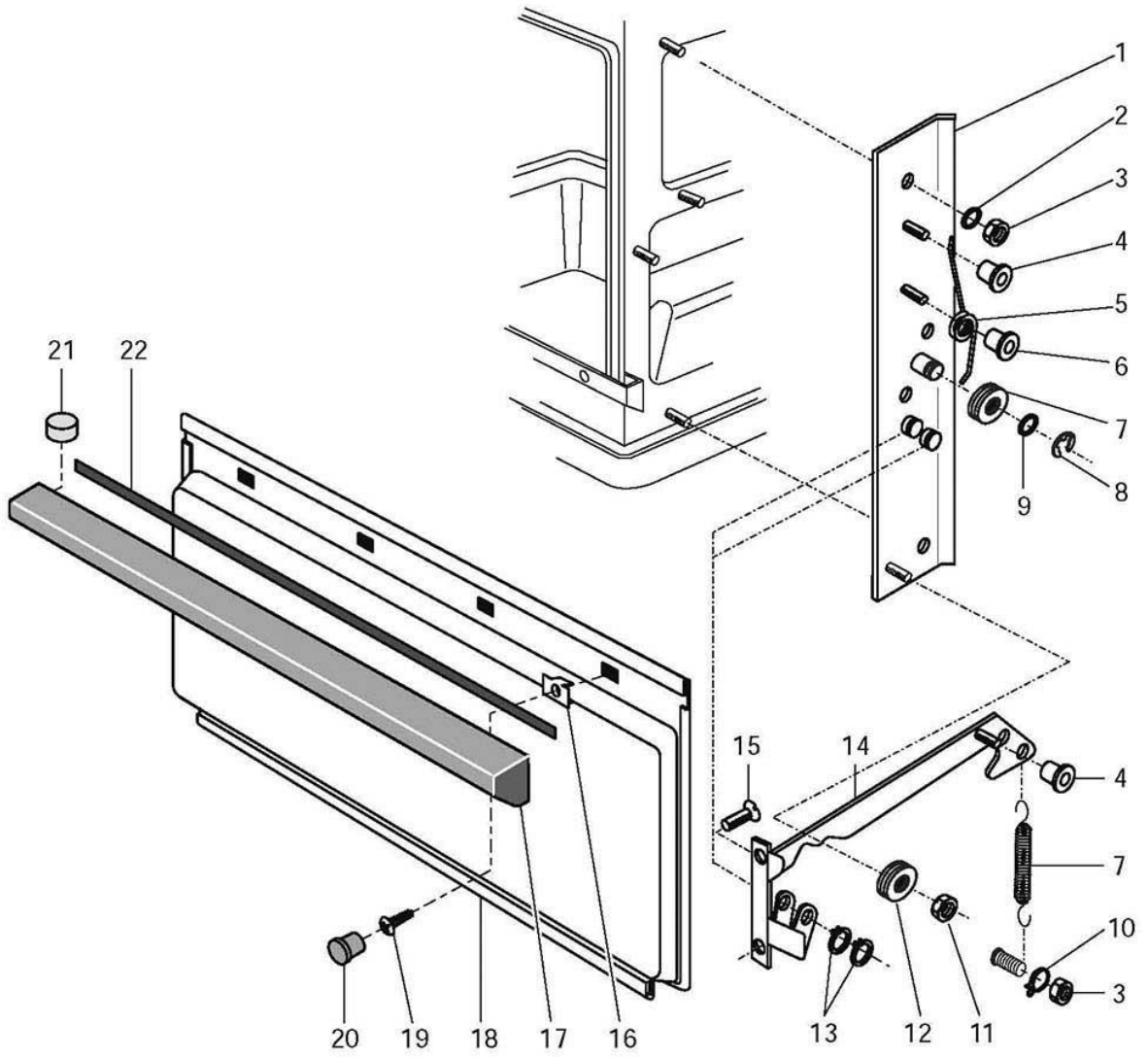
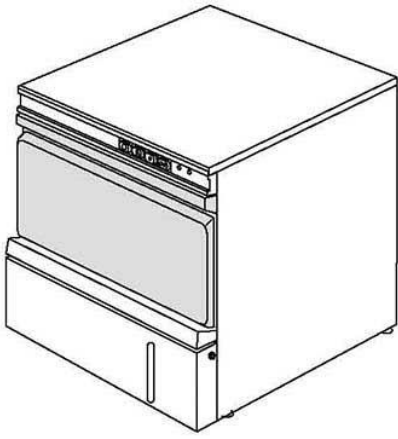
Panel, container, base frame

Item	Designation	Part no.	Pc.	Notes
1	Cover plate	62001888		
2	Hex nut M 4	21 05 300		Self-securing
3	Wire	61004129		
4	Panel right	62002126		
n.p.	Panel left	62002124		
n.p.	Panel rear	62002128		
5	Countersunk head screw B 3,9 x 13	20 21 302		
6	Sheet-metal nut B 3,9	21 17 300		
7	Cable binder	31 20 008		
8	Supporting frame	62001846		
	Supporting frame	62002405		Japan
9	Hex nut M 5	21 05 302		Self-securing
10	Hex nut M6	21 05 304		Self-securing
11	Bearing bolt for locking bar	62001461	2	Until mach. no.: 334 999
12	Clamp strap	31 09 095		
13	Adjusting foot M 8 x 60	62001973	4	
n.p.	Base plate	60002023		
14	Pan head screw M 5 x 20	20 10 325		As from mach. no.: 335 000
15	Front panel	62002139		
16	Locking bar spring	62002187	2	Until mach. no.: 334 999
17	Filling instructions plate	62001382		Rinse aid
18	Locking bar for detergent flap		2	Replaced by item 24, 25
19	Panel for trough	62001802		
20	Seal M 4	22 08 502		
21	Lens head screw M 4 x 8	20 10 310		
22	Housing	62001999		
23	Door seal 10 x 4 x 550; per metre	62001618		Until mach. no.: 359 665
	Door seal frame (adapt)	60002704		As from mach. no.: 359 666
24	Stabilizer	28 06 007		As from mach. no.: 335 000
25	Locking spring	62002187	2	As from mach. no.: 335 000
n.p.	Machine panel 1-part	62001886		
n.p.	Cover for installation opening	62001404		Until mach. no.: 334 999
n.p.	Edge protection	62001437		Until mach. no.: 334 999

-17-

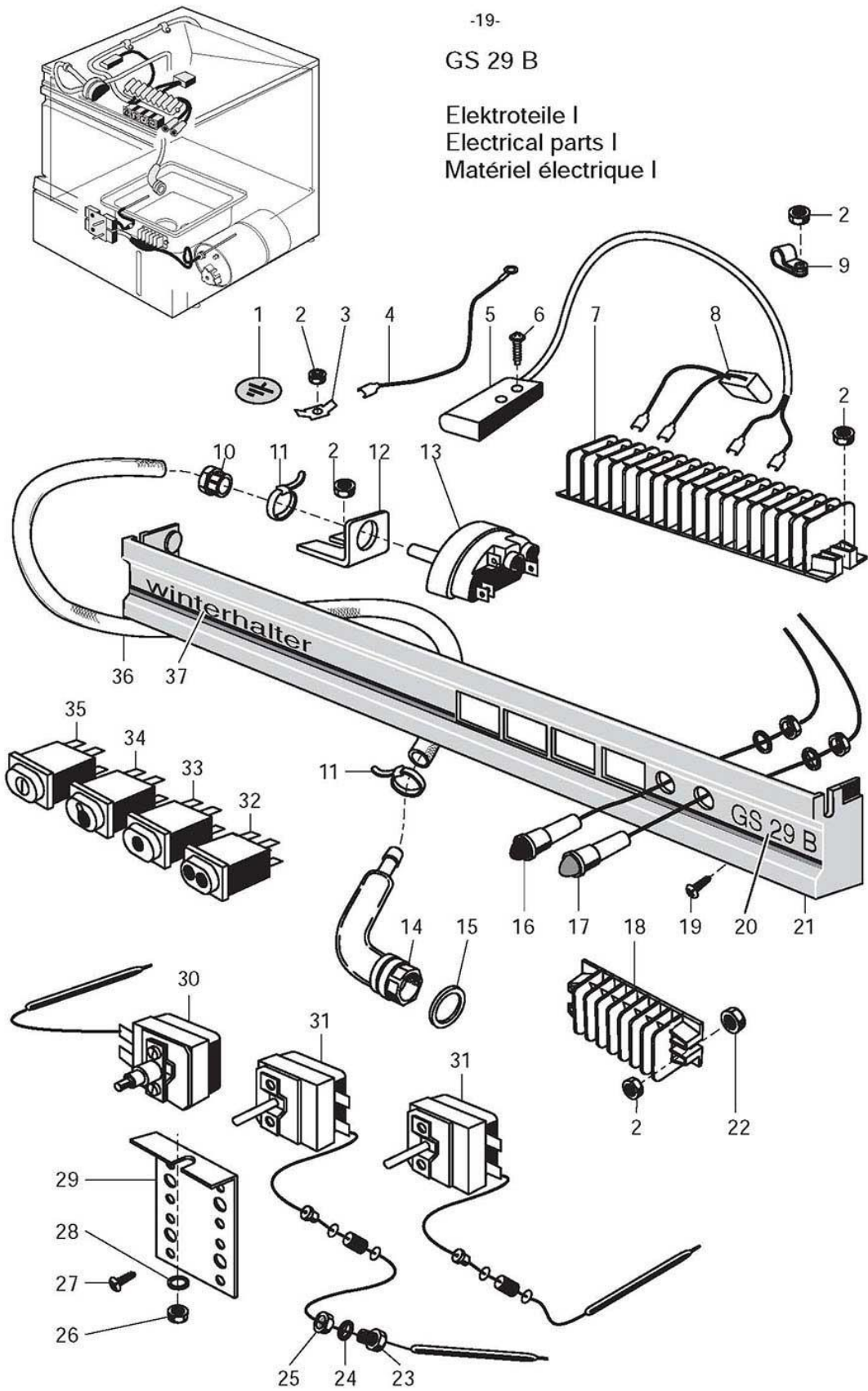
GS 29 B

Türe
Door
Porte



GS 29 B

Elektroteile I
Electrical parts I
Matériel électrique I



GS 29 B

Electrical parts I

Pos.	Designation	Part no.	Pc.	Notes
1	Protection mark green/yellow	31 09 096	3	
2	Hexagon nut M 4	21 05 300		self-securing
3	Flat plug	31 12 003	3	
4	Wiring loom control panel	62001916		
5	Magnetic switch 180 – 265V; 50/60Hz	31 24 221		
6	Screw KB 50 x 10	20 17 304		
7	Terminal strip	31 09 154		16 part
8	RC-member 0,27 µF; 250 V	61002141		
9	Fixing clip ø 11	31 10 125		
10	Catch leading-in	31 10 069		
11	Wire hose clamp; D8,6 x 1	28 02 348		
12	Level switch support	62001350		
13	Level switch 85 / 55 +/- 5	31 26 029		violet blue
14	Air chamber cpl.	55 04 024		Incl. item 15
15	Seal ø 36 x ø 26 x 2	27 01 003		
16	LED red 12 V	31 08 111		
17	LED yellow 12 V	31 08 112		
18	Terminal strip	31 09 155		9 part
19	Countersunk screw M 4 x 6	20 12 302		
20	Plate "GS 29 B"	62002208		
21	Switch panel	55 19 078		Incl. item 20, 37
22	Round nut without slot M 5	21 03 001		
23	Gland for thermostat M 14 x 1	31 25 001		
24	Seal ø 20 x ø 14,2 x 2	27 09 036		
25	Hexagon nut M 14 x 1	31 25 002		
26	Hexagon nut M 5	21 05 302		
27	Lens head screw M 4 x 8	20 10 310		
28	Washer ø 5,3 x ø 12 x 2	22 02 213		
29	Thermostat support	62001859		
30	Safety thermostat 140°C - 10 K "AUS" (off)	31 25 030	2	
31	Thermostat 1750 Iq.	31 25 013	2	
n.p.	Plate "Boiler"	28 03 107		self-adhesive
n.p.	Plate "Tank"	28 03 108		
32	Pressure key button white 250 V	31 24 130		PROGRAMME II
33	Pressure key button white 250 V	31 24 153		PROGRAMME I
34	Lamp white with reset resistance 230 V	31 08 116		HEATING
35	Pressure switch "W" green 250 V	31 24 185		ON-OFF
36	Hose ø 5 x 1,5 x 1200	40 01 024		per metre
37	Type strip "Winterhalter"	62001866		
n.p.	Wire assortment final assembly	62002212		

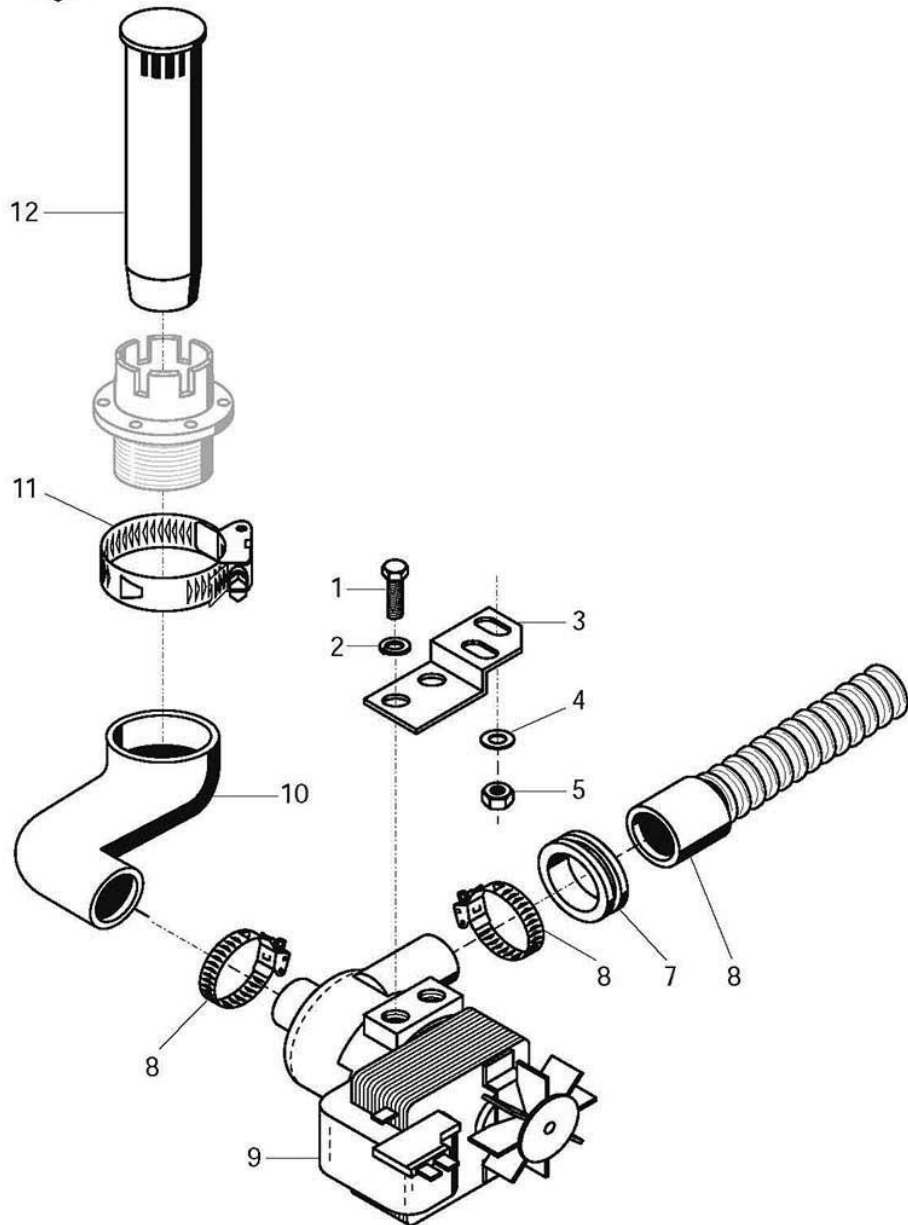
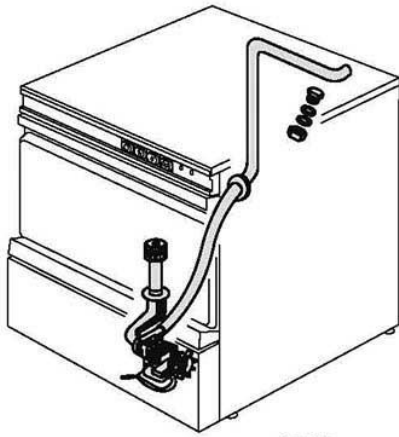
GS 29 B

Electrical parts II

Item	Designation	Part no.	Pc.	Notes
1	Universal fuse terminal UK-Si	31 09 063	2	
2	Two-pin fuse	31 09 072	2	
3	Fuse 250V; 6,3A	31 11 043	2	
4	Double terminal UDK 4 - PE	31 09 153	2	
5	Double terminal UDK 4 - blue	31 09 152		
6	Isolating disk	31 09 066		
7	Double terminal UDK 4 - grey	31 09 151	3	
8	Twin terminal UK 5 - twin	31 09 115	19	
9	Cover	31 09 177		
n.p.	Fixed bridge; 2-pin; FB 2-6	31 09 126		
10	Snap-on rail 172mm long	60001733		
11	Cable gland PG 29	31 10 123	2	
12	Cable gland PG 21	31 10 070		
13	Snap-on rail 250mm long	62001917		
14	Contactor 220-255 V; 50/60 Hz; A16	31 04 162	3	
	Contactor 200V; 50/60 Hz; A16	31 04 163	4	Japan
15	Contactor 220-255V; 50/60Hz; A9	31 04 161		
16	Interference filter	31 12 112		
17	Passing make contact relay	31 04 141		
18	Relay box, bottom part	60001720		
19	Electronic programme switch EPS 1.1; 230V	31 05 131		
	Electronic programme switch EPS 1.1; 200V; 240V	31 05 132		
20	Set Slow start 180-265V 50/60Hz	55 28 253		
21	Interference supression capacitor; 0,27MF + 2 X 27000PF	31 13 078		
22	Relay box cover	62001659		
n.p.	Clock generator	31 04 152		Pulse-controlled filling
n.p.	Wire assortment pulse-controlled filling	60002519		Pulse-controlled filling
n.p.	Set Pulse-controlled filling	80002133		

GS 29 B

Laugenpumpe
Drain pump
Pompe de vidange



GS 29 B

Drain pump (option)

Item	Designation	Part no.	Pc.	Notes
1	Hex-head screw M 6 x 16	20 01 306		
2	Lock washer B 6	23 03 300		
3	Bracket for drain pump	62002803		
4	Washer \varnothing 5.3	22 01 300		
5	Hex nut M 5	21 05 302		Self-securing
6	Spiral hose \varnothing 18,5 x 1500	40 01 039		
7	Rubber bushing \varnothing 35 x \varnothing 60 x 10	40 07 014		
8	Hose clip \varnothing 24 - \varnothing 36	28 02 111		
9	Drain pump 240 V 50 Hz	31 02 010		
10	Hose elbow for drain pump	62002804		
11	Hose clip \varnothing 32 - \varnothing 52	28 02 110		
12	Standpipe	62002768		
n.p.	Cable for drain pump	62001929		
n.p.	Installation drain pump	55 28 159		

